

Managed Personal Remote Access for High Assurance Networks

AEP Series E Remote secures personal remote access communications to government Classified standards+. Using Net Remote, an organisation can enable its mobile workforce to access sensitive data over the Internet at costs previously associated with commercial remote access. Net Remote benefits from the AEP Net Management System, taking advantage of the proven key and device management features utilised by AEP's E Series encryption products. E Series Remote provides a highly scalable solution with flexible configuration options, allowing organisations to maximise their Return On Investment (ROI) as their business needs evolve.

Remote Working

Government policy requires public sector organisations to offer home working to their workforce wherever possible. These bodies can now extend remote access to Classified data over a range of network access technologies including remote office LAN, broadband (over DSL or cable), and Ethernet-enabled WiFi, without the normal restrictions and overhead expenses. Net Remote delivers the throughput to satisfy a wide range of demanding applications, including VoIP and Video over IP.

Integrates with AEP Series E Gateway Encryptors

AEP Net Remote works seamlessly with existing AEP Net encryptor deployments. A unique 'tunnel routing' feature transparently enables authorised remote users to access resources on AEP Net secured intranets and extranets.

Deployment Options

Net Remote connects via an AEP Net encryptor in concentrator mode. It can be deployed as a stand-alone solution for remote access, or as a remote access adjunct to an existing AEP Net secured network. Communications continuity and disaster recovery options are available. For mobile workers AEP Networks offers solutions integrated with our V Series multi bearer communications modules.

High Assurance Standards

Net Remote provides secure personal remote access communications; it is approved to assure data confidentiality to national security standards (Enhanced Grade) across public networks such as the Internet.

Ease of Deployment and Management

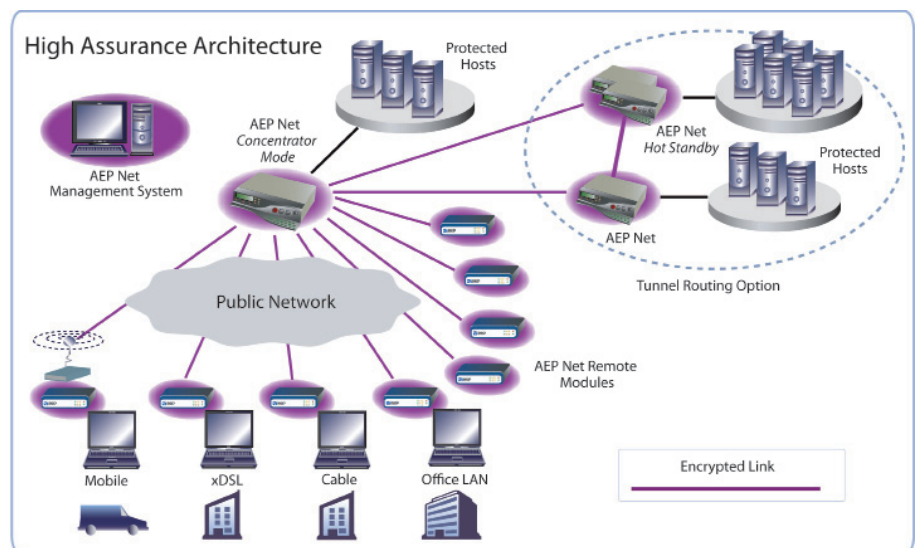
The proven AEP Net Management System has been extended to provide unparalleled scalability of security policy and key management for a remote security device. Purpose designed to facilitate rapid rollout and system evolution, the AEP Net Management System enables user communities of all sizes to be managed from the network centre.



Features include:

- Fully automated keying; no CESH key material at remote site
- Assured cryptographic separation of user communities
- Compromise control; cryptographic isolation of a suspect - unit giving instant "kill" capability in the event of compromise or loss
- No need to return units to a central site for key updates

The modular design allows operation and management by either the customer or a managed service provider and the fully automated key management eliminates most of the administration costs traditionally associated with such systems. Unique functionality enables Managed Service Providers to offer secure remote access solutions for complex user communities, including interoperation projects.





Key Features

Series E Remote

- ▶ Portable IPsec-based data security module for remote access
- ▶ Approved boundary device – can be connected directly to the Internet without the need for an external firewall
- ▶ Dedicated Ethernet device supports 10/100 Base-T
- ▶ Algorithm variants available to protect Classified data to UK and EU government standards
- ▶ Sophisticated tamper proofing and compromise control
- ▶ Continuous output monitoring for cryptographic integrity assurance
- ▶ Continuous random number generation checks
- ▶ Self-test health check on power-up
- ▶ Automatic traffic key management using ISAKMP

Management

- ▶ AEP Management System enforces security policy and provides encryptor administration and key management
- ▶ AEP Net Remote and AEP Net devices managed by the same AEP Management System
- ▶ Highly scalable – capacity for in excess of 50,000 users`
- ▶ PKI authentication – using AEP Networks’ Hardware Security Module Certification Authority
- ▶ Central control of X.509V3 certificate issuance and revocation
- ▶ Encryptor management cryptographically isolated from network traffic
- ▶ Both certificate and address-based Communities of Interest (COI) and Closed User Group (CUG) management
- ▶ No requirement for user to return the unit to a central site for key updates
- ▶ Units can be re-keyed from the network centre in the event of security compromise
- ▶ Secure audit and accounting

Network Integration

- ▶ 10/100 Base-T public and private Ethernet interfaces
- ▶ Concentrator resilient operation provides business continuity and disaster recovery capability
- ▶ Quality of Service (QoS) marker pass through
- ▶ Central connection via AEP E series devices in concentrator mode

Technical Specifications

Performance	Sustained encrypted traffic throughput †	18 Mbps	
	Remote access users per concentrator	20M Concentrator	100 (10 concurrent)
100M Concentrator		1000 (100 concurrent)	
Network Interfaces	WAN	10/100 Base-T Ethernet autonegotiation (N-way)	
	LAN	10/100 Base-T Ethernet autonegotiation (N-way)	
Environmental	Temperature	Storage when installed, Operating: 5°C (41°F) to 40°C (104°F)	
		Storage: -15°C (5°F) to 65°C (149°F)	
Humidity	25% - 90% non-condensing		
	Height	28mm (1.1 in)	
Physical Dimensions	Width	118mm (4.65 in)	
	Depth	195mm (7.68 in)	
	Weight	0.8 Kg (.18 lbs) including power supply	
Power	100V to 240V, 50-60Hz auto-sensing external in-line mains AC to DC converter, 28VA maximum		
Electrical Safety	EN 60950: 1992/A11:1997 IEC 950:1991/A4:1996 + All CB Countries. CSA C22.2 No 950 UL 1950: 1995/Amended 1998 UL 60950/CSA 60950 AS/NZS 3260:1993/A4:1997		
EMC	EN 55024:1998/A1:2001 (Measured as per: IEC 61000-4-2:1995, IEC 61000-4-3:1995, IEC 61000-4-4:1995, IEC 61000-4-5:1995, IEC 61000-4-6:1995, IEC 61000-4-8:1995, IEC 61000-4-11:1995.) EN 61000-3-2:2000 EN 61000-3-3:1995/A1:2001 European Standard 55022:1994/A1:1995/A2:1997 Class B. CFR 47, Part 15 Class B. (FCC)		
MTBF	50,000 hrs based on British Telecom HRD5 standard		

† Based on 1456 byte packets

Accreditation



United States

Toll-Free: +1-877-638-4552
Tel: +1-732-652-5200

Email: sales@aepnetworks.com

Europe

Tel: +44 1344 637 300

Web: www.aepnetworks.com

SE Asia, Singapore

Tel: +852 2961 4566

Japan

Tel: +81 3 5979 2149

Australia/New Zealand

Tel: +61 2 9413 2282

Malaysia

Tel: +60 32166 2260